



**National Summary of Large Trucks Involved in Crashes**

Number of Large Trucks Involved in:	2002	2003	2004	2005	2006
Fatal and Non-Fatal Crashes (FARS & MCMIS)	116,651	125,456	139,302	145,447	140,473
Fatal Crashes (FARS)	4,587	4,721	4,902	4,951	4,732
Fatal Crashes (MCMIS)	4,429	4,353	4,846	5,217	4,879
Non-Fatal Crashes (MCMIS)	112,064	120,735	134,400	140,496	135,741
Injury Crashes (MCMIS)	55,646	57,274	60,766	60,993	57,213
Towaway Crashes (MCMIS)	56,418	63,461	73,634	79,503	78,528
HM Placard Crashes (MCMIS)	1,750	2,087	2,451	2,426	2,285

**Number of:**

Fatalities (FARS)	4,939	5,036	5,235	5,240	4,995
Injuries (MCMIS)	85,916	87,167	91,759	92,490	85,984

The MCMIS Crash File is intended to be a census of trucks and buses involved in fatal, injury and towaway crashes; however, some States do not report all FMCSA-eligible crashes. FMCSA continues to work with the States to improve data quality and reporting of all eligible truck and bus crashes to the MCMIS crash file.

**National Summary of Buses Involved in Crashes**

Number of Buses Involved in:	2002	2003	2004	2005	2006
Fatal and Non-Fatal Crashes (FARS & MCMIS)	7,039	8,400	9,161	10,832	11,237
Fatal Crashes (FARS)	274	291	279	280	299
Fatal Crashes (MCMIS)	169	180	210	247	254
Non-Fatal Crashes (MCMIS)	6,765	8,109	8,882	10,552	10,938
Injury Crashes (MCMIS)	3,944	4,936	5,212	5,936	6,142
Towaway Crashes (MCMIS)	2,821	3,173	3,670	4,616	4,796
HM Placard Crashes (MCMIS)	5	0	0	8	10

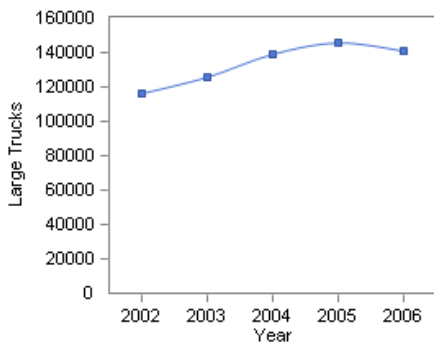
**Number of:**

Fatalities (FARS)	331	337	315	340	331
Injuries (MCMIS)	9,946	11,847	12,727	14,460	14,467

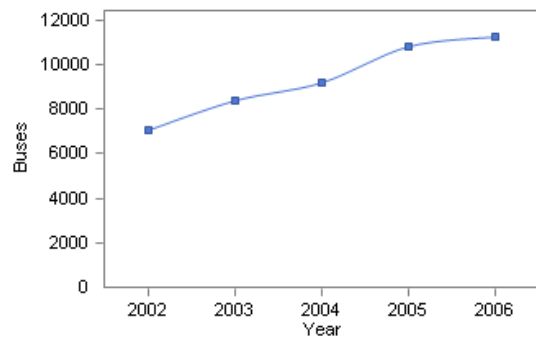
The MCMIS Crash File is intended to be a census of trucks and buses involved in fatal, injury and towaway crashes; however, some States do not report all FMCSA-eligible crashes. FMCSA continues to work with the States to improve data quality and reporting of all eligible truck and bus crashes to the MCMIS crash file.

Data Source: [FARS & MCMIS \(September 2007 data snapshot\)](#)

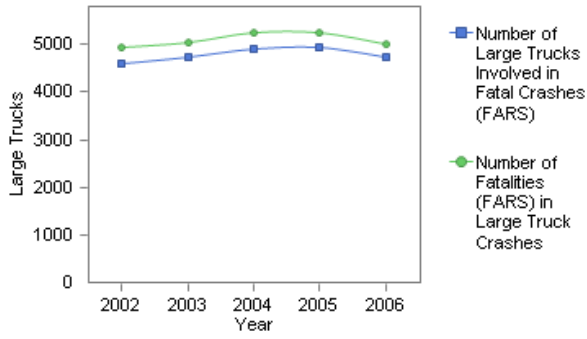
Number of Large Trucks Involved in Fatal and Non-Fatal Crashes (FARS & MCMIS)



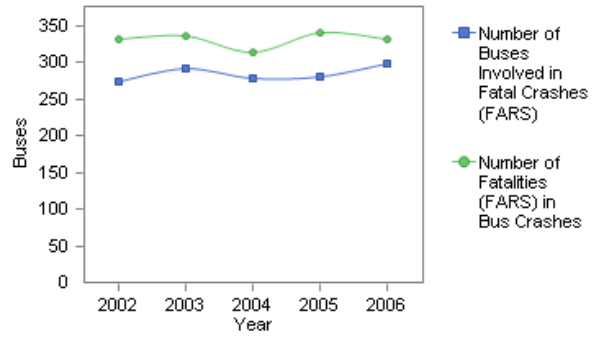
Number of Buses Involved in Fatal and Non-Fatal Crashes (FARS & MCMIS)



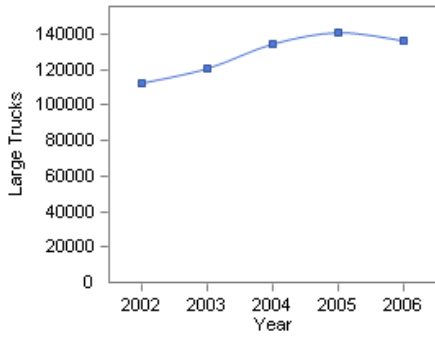
Number of Large Trucks Involved in Fatal Crashes



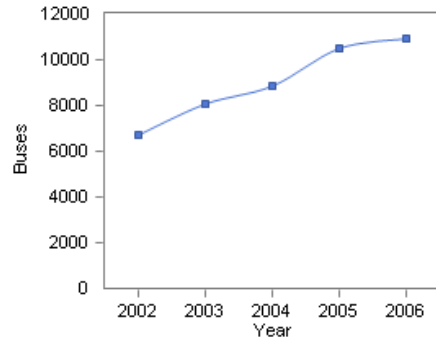
Number of Buses Involved in Fatal Crashes



Number of Large Trucks Involved in Non-Fatal Crashes (MCMIS)



Number of Buses Involved in Non-Fatal Crashes (MCMIS)



[Data Source: FARS & MCMIS \(September 2007 data snapshot\)](#)

**CAUTION:** Although efforts have been made to provide the most accurate and complete MCMIS Crash data possible, data quality can vary from state to state. Please use caution when interpreting MCMIS crash data.